

## **Taking Forward Local Children's Arrangements Through Clinical Commissioning Groups Health and Wellbeing Boards**

### **What is the Proposal?**

The proposal is to move from the existing 12 Local Children's Trust Board model to one based on the 7 Clinical Commissioning Groups (CCGs) Health Wellbeing Boards boundaries. The formal decision will be made by the Cabinet Member for Specialist Children's Services in due course.

### **What is the membership of the CCG Health and Wellbeing Board?**

#### *Local Government Representation:*

District Council Member  
Kent County Council Member  
KCC Families and Social Care Senior Officer  
District Council Officers  
Public Health representative.

#### *CCG Representation:*

GP  
Senior CCG Officer  
Commissioning Support representative.

There is also a HealthWatch representative allocated to each board  
There is also the opportunity for other local representatives identified by the CCG HWB.

### **How will the broader children's issues be represented on the CCG HWB?**

It is proposed that one representative from the CCG HWB Children's Operational Group(COG) (district-based) should sit on the CCG HWB. The suggested COG representatives would be as follows:

Ashford HWB:	One Children's Representative
C4G HWB:	One Children's Representative
DGS HWB:	Three Children's Representatives
SKC HWB:	Two Children's Representatives
Swale HWB:	One Children's Representative
Thanet:	One Children's Representative
West Kent HWB:	Four Children's Representatives

#### Selection of COG representatives

It is suggested that a meeting is held in September or soon after to identify the nominated CCG HWB COG representative.

**When will the new arrangements come into effect?**

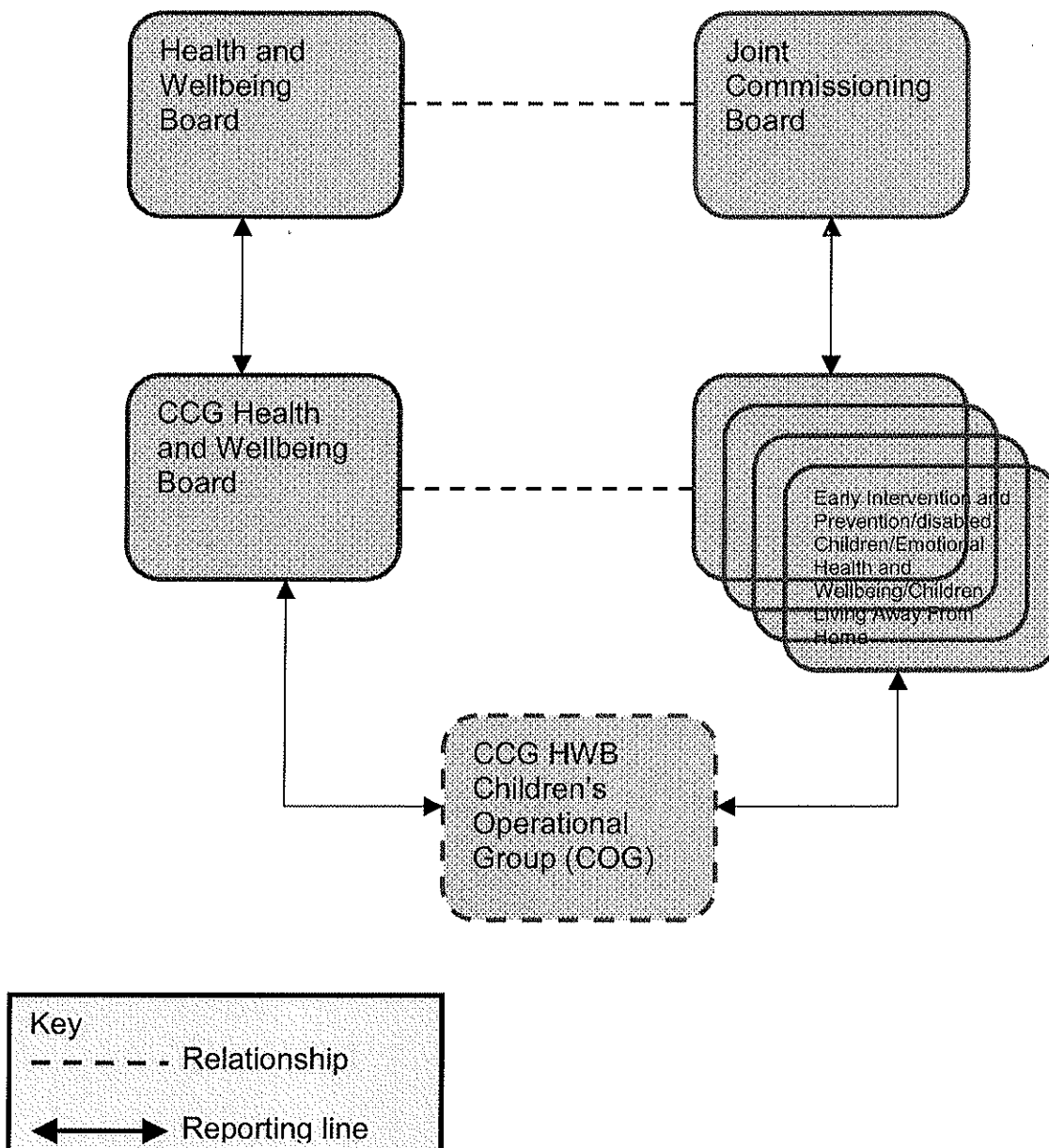
The new arrangements will come into effect on 1 October 2013.

**How will Children’s Centre District Advisory Board fit into the new arrangements?**

The Children’s Centre District Advisory Board report will be in line with the reporting process outlined in the consultation. The work of DAB will be reflected in the report of local network.

It would be necessary for COG to link with other boards and groups such as Troubled Families and Kent Integrated Adolescent Support Services.

**Governance organogram for the new arrangements**



## **Clinical Commissioning Group Level Health and Wellbeing Board's**

### **Children's Sub-group (Children's Operational Group)**

#### **Draft Terms of Reference (considered by JCB on 01.08.13)**

#### **Role of the Sub-group**

The purpose of the Children's Operational Group is to ensure effective child and family centred local engagement by partners, promote collaboration between organisations with the aim of improving the wellbeing of all children through effective the implementation of strategies, planning, joined-up commissioning and effective service delivery.

The Children's Operational Group will:

1. Report to the Clinical Commissioning Group Level Health and Wellbeing Board and the Children and Young People Joint Commissioning Board.
2. Drive and support joined-up service delivery and promote service integration and take forward projects on behalf of, or in collaboration with the Clinical Commissioning Group Level Health and Wellbeing Board.
3. Consider how resources can be pooled for a positive impact on the wellbeing of all children.
4. Debate and explore ideas to address current, emerging and future needs, problems and issues inhibiting effective delivery of integrated services and make recommendations to the Clinical Commissioning Group Level Health and Wellbeing Board and the Children and Young People Joint Commissioning Board and other bodies as appropriate.
5. Monitor and challenge service delivery where outcomes are poor.
6. Review lessons learned and use benchmarking information to improve services.
7. Ensure effective local engagement on children's issues, using existing mechanisms and where necessary linking up with appropriate bodies.
8. Advice (as part of the early warning system) the Clinical Commissioning Group Level Health Board and Wellbeing and the Children and Young People Joint Commissioning Board (other bodies as appropriate) on local service issues that may have adverse impact on the wellbeing of all children.
9. Report to the Clinical Commissioning Group Level Health Board and Wellbeing and the Children and Young People Joint Commissioning Board twice a year on its activities and any significant emerging issues.